

PORTMEAD PRIMARY

Curiosity Curriculum

Portmead Primary - Overarching Themes

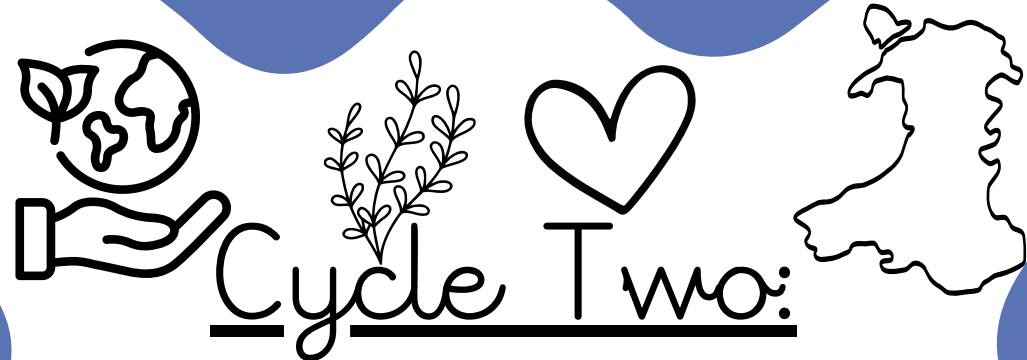


Cycle One:

Flight

Kingdoms
(Life in Every Corner)

Celebrations



Cycle Two:

Cynefin

A Moment in Time

Our World
(Sustainability)



Cycle Three:

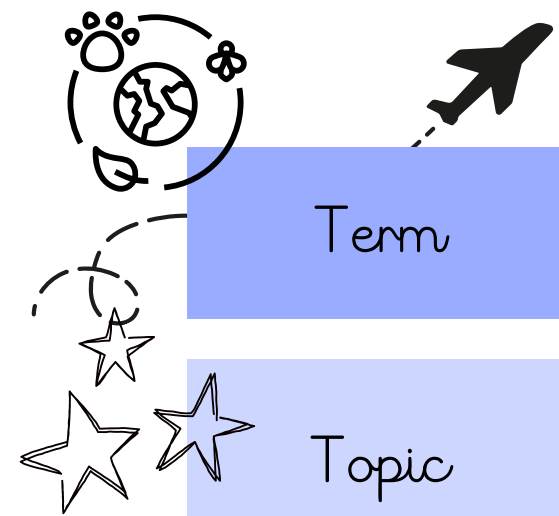
Backpackers

Awe & Wonder

Express Yourself /
Ourselves



Cycle One:



Term

Autumn

Spring

Summer

Topic

Flight

Kingdoms
(Life in Every Corner)

Celebration

Driver

(Statements
of what
matters)

Humanities
Enquiry, exploration and investigation inspire curiosity about the world, its past, present and future.

Events and human experiences are complex, and are perceived, interpreted and represented in different ways.

Science and Technology
The world around us is full of living things which depend on each other for survival.

Being curious and searching for answers is essential to understanding and predicting phenomena.

Expressive Arts
Exploring the expressive arts is essential to developing artistic skills and knowledge and it enables learners to become curious and creative individuals.

Responding and reflecting, both as artist and audience, is a fundamental part of learning in the expressive arts.

Creating combines skills and knowledge, drawing on the senses, inspiration and imagination.

Secondary
Driver

(Statements
of what
matters)

Science and Technology
Design thinking and engineering offer technical and creative ways to meet society's needs and wants.

Computation is the foundation for our digital world.

Forces and energy provide a foundation for understanding our universe.

Health & Wellbeing
Developing physical health and well-being has lifelong benefits.

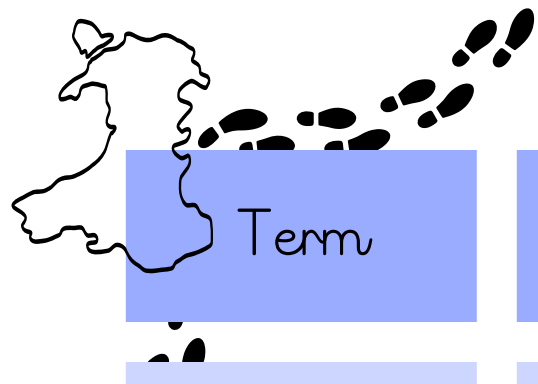
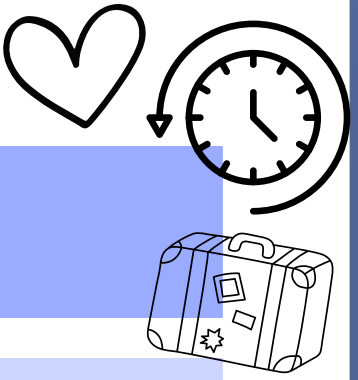
How we engage with social influences shapes who we are and affects our health and well-being.

Humanities
Events and human experiences are complex, and are perceived, interpreted and represented in different ways.

Human societies are complex and diverse, and shaped by human actions and beliefs.



Cycle Two:



Term

Autumn

Spring

Summer

Topic

Cynefin

A Moment in Time

Our World (Sustainability)

Driver

(Statements of what matters)

Health & Wellbeing
Our decision-making impacts on the quality of our lives and the lives of others.

How we engage with social influences shapes who we are and affects our health and well-being.

Expressive Arts
Exploring the expressive arts is essential to developing artistic skills and knowledge and it enables learners to become curious and creative individuals.

Responding and reflecting, both as artist and audience, is a fundamental part of learning in the expressive arts.

Creating combines skills and knowledge, drawing on the senses, inspiration and imagination.

Science & Technology
The world around us is full of living things which depend on each other for survival.

Matter and the way it behaves defines our universe and shapes our lives.

Computation is the foundation for our digital world.

Secondary Driver

(Statements of what matters)

Humanities
Enquiry, exploration and investigation inspire curiosity about the world, its past, present and future.

Events and human experiences are complex, and are perceived, interpreted and represented in different ways.

Human societies are complex and diverse, and shaped by human actions and beliefs.

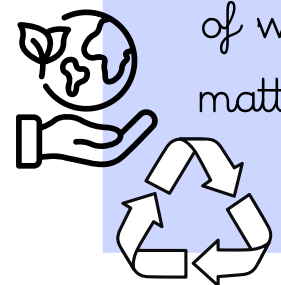
Humanities
Enquiry, exploration and investigation inspire curiosity about the world, its past, present and future.

Events and human experiences are complex, and are perceived, interpreted and represented in different ways.

Human societies are complex and diverse, and shaped by human actions and beliefs.

Health & Wellbeing
Our decision-making impacts on the quality of our lives and the lives of others.

How we engage with social influences shapes who we are and affects our health and well-being.



Cycle Three:



Term	Autumn	Spring	Summer
Topic	Backpackers	Awe & Wonder	Express Yourself / Ourselves
Driver (Statements of what matters)	<p><u>Humanities</u></p> <p>Our natural world is diverse and dynamic, influenced by processes and human actions.</p> <p>Human societies are complex and diverse, and shaped by human actions and beliefs</p>	<p><u>Humanities</u></p> <p>Enquiry, exploration and investigation inspire curiosity about the world, its past, present and future.</p> <p>Our natural world is diverse and dynamic, influenced by processes and human actions.</p>	<p><u>Health & Wellbeing</u></p> <p>How we process and respond to our experiences affects our mental health and emotional well-being.</p> <p>Our decision-making impacts on the quality of our lives and the lives of others.</p> <p>Healthy relationships are fundamental to our well-being.</p>
Secondary Driver (Statements of what matters)	<p><u>Expressive Arts</u></p> <p>Exploring the expressive arts is essential to developing artistic skills and knowledge and it enables learners to become curious and creative individuals.</p> <p>Responding and reflecting, both as artist and audience, is a fundamental part of learning in the expressive arts.</p> <p>Creating combines skills and knowledge, drawing on the senses, inspiration and imagination.</p>	<p><u>Science & Technology</u></p> <p>Being curious and searching for answers is essential to understanding and predicting phenomena.</p> <p>Forces and energy provide a foundation for understanding our universe.</p> <p>Matter and the way it behaves defines our universe and shapes our lives</p>	<p><u>Expressive Arts</u></p> <p>Exploring the expressive arts is essential to developing artistic skills and knowledge and it enables learners to become curious and creative individuals.</p> <p>Responding and reflecting, both as artist and audience, is a fundamental part of learning in the expressive arts.</p> <p>Creating combines skills and knowledge, drawing on the senses, inspiration and imagination.</p>

